

PRODUCT DATA SHEET

Part number 11400

EAN 4015609006977

Manufacturer WALTHER-WERKE

WEEE-Reg.-Number: DE 22131895

Product description

NORVO panel socket straight 32A 2P 0h for low voltage with flange 50x50mm



Product image

Detailed product description

WALTHER Panel socket 32A 2P 24V 0h IP44
 low-voltage connector from the NORVO series
 straight
 made from PA6 material
 in purple
 flange 50x50mm
 fixing center 41x41mm

Ordering Information

Order unit	Piece
Customs number	85366990
Net weight	0,101 kg
Packing quantity (VPE)	10
Length of the packaging	0,31 m
Width of the packaging	0,195 m
Depth of the packaging	0,14 m
Gross weight(VPE)	1,158 kg

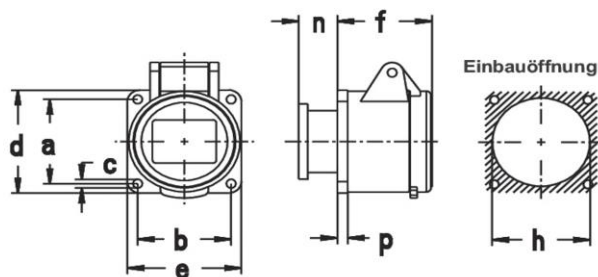
Classification system

Classification system	ETIM_6.0
ETIM Class	EC001317

Technical product data

IEC-amperage	32 A
Amperage acc. UL/CSA (for UL-version)	30 A
Number of poles	2
Voltage acc. EN 60309-2	20-25 V (50+60 Hz) violet
Clock hour position	0 h
Identification colour	Violet (lilac)
Degree of protection (IP)	IP44
Connection system	Screwed terminal
Angle of plug	Straight
Material	Plastic
Military model	False
Flange size vertical	50 mm
Drill hole distance vertical	41 mm
Flange size horizontal	50 mm
Drill hole distance horizontal	41 mm

Dimension sheet



Amp.	16		32	
Pole	2	3	2	3
a	41	41	41	41
b	41	41	41	41
c	4,2	4,2	4,2	4,2
d	50	50	50	50
e	50	50	50	50
f	42	42	42	42
h	40	40	40	40
n	18	18	18	18
p	4	4	4	4

Befestigungsmaß = a + b, Flanschmaß = d + e