

## PRODUCT DATA SHEET

---

Part number 11402

---

EAN 4015609006991

Manufacturer WALTHER-WERKE

WEEE-Reg.-Number: DE 22131895

### Product description

---

NORVO panel socket straight 32A 2P 4h for low voltage with flange 50x50mm



Similar image

### Detailed product description

---

WALTHER Panel socket 32A 2P 42V 4h IP44  
 low-voltage connector from the NORVO series  
 straight  
 made from PA6 material  
 in purple  
 flange 50x50mm  
 fixing center 41x41mm

### Ordering Information

---

Order unit	Piece
Customs number	85366990
Net weight	0,101 kg
Packing quantity (VPE)	10
Length of the packaging	0,31 m
Width of the packaging	0,195 m
Depth of the packaging	0,14 m
Gross weight(VPE)	1,158 kg

### Classification system

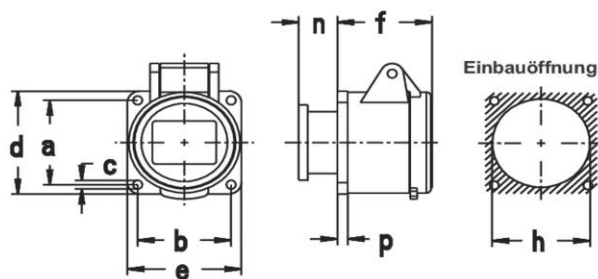
---

Classification system	ETIM_6.0
ETIM Class	EC001317

## Technical product data

IEC-ampereage	32 A
Amperage acc. UL/CSA (for UL-version)	30 A
Number of poles	2
Voltage acc. EN 60309-2	20-25 V / 40-50 V (100-200 Hz) green
Clock hour position	4 h
Identification colour	Green
RAL-number	6025
Degree of protection (IP)	IP44
Connection system	Screwed terminal
Angle of plug	Straight
Material	Plastic
Military model	False
Flange size vertical	50 mm
Drill hole distance vertical	41 mm
Flange size horizontal	50 mm
Drill hole distance horizontal	41 mm

## Dimension sheet



Amp.	16		32	
Pole	2	3	2	3
a	41	41	41	41
b	41	41	41	41
c	4,2	4,2	4,2	4,2
d	50	50	50	50
e	50	50	50	50
f	42	42	42	42
h	40	40	40	40
n	18	18	18	18
p	4	4	4	4

Befestigungsmaß = a + b, Flanschmaß = d + e