

PRODUCT DATA SHEET

Part number 11403

EAN 4015609007004

Manufacturer WALTHER-WERKE

WEEE-Reg.-Number: DE 22131895

Product description

NORVO panel socket straight 32A 2P 2h for low voltage with flange 50x50mm



Similar image

Detailed product description

WALTHER Panel socket 32A 2P 42V 2h IP44
 low-voltage connector from the NORVO series
 straight
 made from PA6 material
 in purple
 flange 50x50mm
 fixing center 41x41mm

Ordering Information

| | |
|-------------------------|----------|
| Order unit | Piece |
| Customs number | 85366990 |
| Net weight | 0,101 kg |
| Packing quantity (VPE) | 10 |
| Length of the packaging | 0,31 m |
| Width of the packaging | 0,195 m |
| Depth of the packaging | 0,14 m |
| Gross weight(VPE) | 1,158 kg |

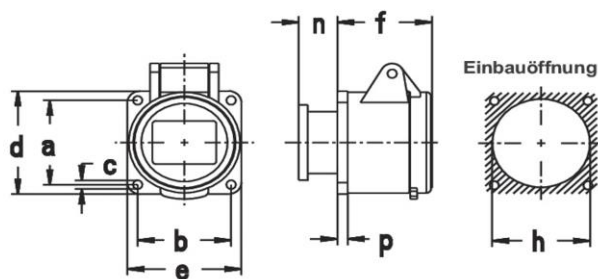
Classification system

| | |
|-----------------------|----------|
| Classification system | ETIM_6.0 |
| ETIM Class | EC001317 |

Technical product data

| | |
|---------------------------------------|----------------------------------|
| IEC-ampereage | 32 A |
| Amperage acc. UL/CSA (for UL-version) | 30 A |
| Number of poles | 2 |
| Voltage acc. EN 60309-2 | 20-25 V / 40-50 V (300 Hz) green |
| Clock hour position | 2 h |
| Identification colour | Green |
| RAL-number | 6025 |
| Degree of protection (IP) | IP44 |
| Connection system | Screwed terminal |
| Angle of plug | Straight |
| Material | Plastic |
| Military model | False |
| Flange size vertical | 50 mm |
| Drill hole distance vertical | 41 mm |
| Flange size horizontal | 50 mm |
| Drill hole distance horizontal | 41 mm |

Dimension sheet



| Amp. | 16 | | 32 | |
|------|-----|-----|-----|-----|
| Pole | 2 | 3 | 2 | 3 |
| a | 41 | 41 | 41 | 41 |
| b | 41 | 41 | 41 | 41 |
| c | 4,2 | 4,2 | 4,2 | 4,2 |
| d | 50 | 50 | 50 | 50 |
| e | 50 | 50 | 50 | 50 |
| f | 42 | 42 | 42 | 42 |
| h | 40 | 40 | 40 | 40 |
| n | 18 | 18 | 18 | 18 |
| p | 4 | 4 | 4 | 4 |

Befestigungsmaß = a + b, Flanschmaß = d + e