

PRODUCT DATA SHEET

Part number 116406

EAN 4015609009930

Manufacturer WALTHER-WERKE

WEEE-Reg.-Number: DE 22131895

Product description

MONDO wall socket surface-mounted 16A 4P 6h
 in light grey



Similar image



Detailed product description

WALTHER Wall socket 16A 4P 400V 6h IP44
 from the MONDO series
 made from PA6 material
 surface-mounted
 in light grey (RAL 7035)
 outer dimensions 98x64.3
 The flat cover allows a low housing height
 and is therefore suitable for prestigious areas.

Ordering Information

Order unit	Piece
Customs number	85366990
Net weight	0,32 kg
Packing quantity (VPE)	5
Length of the packaging	0,31 m
Width of the packaging	0,195 m
Depth of the packaging	0,14 m
Gross weight(VPE)	1,748 kg

Certificates

VDE certification	123017	
EAC certification	BY112.02.01.020 06089	

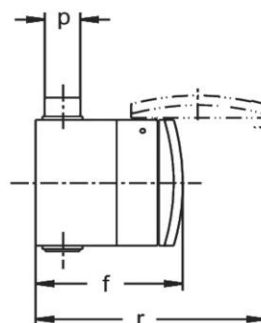
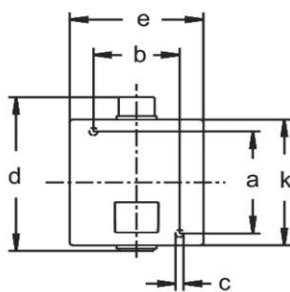
Classification system

Classification system	ETIM_6.0
ETIM Class	EC001318

Technical product data

Current supply	CEE 16 A
Number of poles	4
Voltage acc. EN 60309-2	400 V (50+60 Hz) red
Clock hour position	6 h
Identification colour	Red
Construction type	Wall mounted socket
Configuration	Closed cover
Colour	Grey
RAL-number	7035

Dimension sheet



Amp.	16			32		
Pole	3	4	5	3	4	5
a	73	73	73	73	73	73
b	58	58	58	58	58	58
c	5,5	5,5	5,5	5,5	5,5	5,5
d	114	114	114	114	114	114
e	90	90	90	90	90	90
f	92	92	92	98	98	98
k	90	90	90	90	90	90
n	1,5	1,5	1,5	1,5	1,5	1,5
p	8/20	8/20	8/20	8/20	8/20	8/20
r	150	150	150	160	160	160