

PRODUCT DATA SHEET

Part number 316306

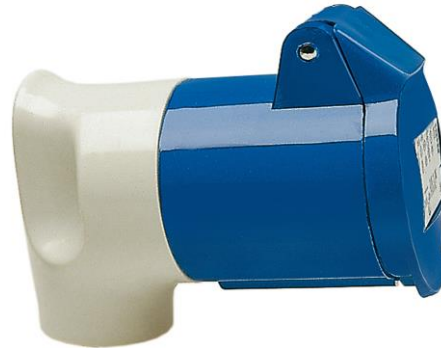
EAN 4015609016310

Manufacturer WALTHER-WERKE

WEEE-Reg.-Number: DE 22131895

Product description

MONDO angled coupler 16A 3P 6h



Product image

Detailed product description

WALTHER angled Coupler 16A 3P 230V 6h IP44
 from the MONDO series
 made from PA6 material
 with screw terminal
 and grommet

Ordering Information




Order unit	Piece
Customs number	85366990
Net weight	0,3041 kg
Packing quantity (VPE)	10
Length of the packaging	0,31 m
Width of the packaging	0,163 m
Depth of the packaging	0,113 m
Gross weight(VPE)	3,153 kg

Certificates

VDE/ENEC certification

40024796



UL certification	No. E329476	
EAC certification	BY112.02.01.020 06101	
CSA certification	70096522	

Classification system

Classification system	ETIM_6.0
ETIM Class	EC001320

Technical product data

IEC-amperage	16 A
Amperage acc. UL/CSA (for UL-version)	20 A
Number of poles	3
Voltage acc. EN 60309-2	230 V (50+60 Hz) blue
Clock hour position	6 h
Identification colour	Blue
RAL-number	7035
Degree of protection (IP)	IP44
Connection system	Screwed terminal
Angle of plug	Angled
Cable entry	Anti-kink sleeve
Material	Plastic

Dimension sheet

