

## PRODUCT DATA SHEET

---

|                   |               |
|-------------------|---------------|
| Part number       | 410410        |
| EAN               | 4015609018543 |
| Manufacturer      | WALTHER-WERKE |
| WEEE-Reg.-Number: | DE 22131895   |

### Product description

---

Panel socket straight 16A 4P 10h with flange  
75x75mm



Similar image

### Detailed product description

---

WALTHER Panel socket 16A 4P 50-500V 100-300Hz 10h IP44  
 straight  
 made from PA6 material  
 finger-safe in accordance with BGV A3  
 soft transition  
 radius from flange to collar  
 flange 75x75  
 fixing center 60x60




### Ordering Information

---

|                         |           |
|-------------------------|-----------|
| Order unit              | Piece     |
| Customs number          | 85366990  |
| Net weight              | 0,1618 kg |
| Packing quantity (VPE)  | 10        |
| Length of the packaging | 0,31 m    |
| Width of the packaging  | 0,163 m   |
| Depth of the packaging  | 0,113 m   |
| Gross weight(VPE)       | 1,73 kg   |

### Certificates

---

|                   |                       |   |
|-------------------|-----------------------|---|
| VDE certification | 123017                |  |
| UL certification  | No. E83342            |  |
| EAC certification | BY112.02.01.020 06089 |  |

## Classification system

---

|                       |          |
|-----------------------|----------|
| Classification system | ETIM_6.0 |
| ETIM Class            | EC001317 |

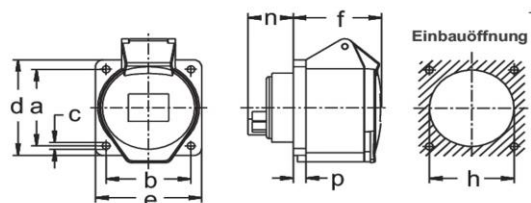
## Technical product data

---

|                                       |                             |
|---------------------------------------|-----------------------------|
| IEC-amperage                          | 16 A                        |
| Amperage acc. UL/CSA (for UL-version) | 20 A                        |
| Number of poles                       | 4                           |
| Voltage acc. EN 60309-2               | 50-500 V (100-300 Hz) green |
| Clock hour position                   | 10 h                        |
| Identification colour                 | Green                       |
| RAL-number                            | 6025                        |
| Degree of protection (IP)             | IP44                        |
| Connection system                     | Screwed terminal            |
| Angle of plug                         | Straight                    |
| Material                              | Plastic                     |
| Military model                        | False                       |
| Flange size vertical                  | 75 mm                       |
| Drill hole distance vertical          | 60 mm                       |
| Flange size horizontal                | 75 mm                       |
| Drill hole distance horizontal        | 60 mm                       |

## Dimension sheet

---



| Amp. | 16  |     |     | 32  |     |     |
|------|-----|-----|-----|-----|-----|-----|
| Pole | 3   | 4   | 5   | 3   | 4   | 5   |
| a    | 60  | 60  | 60  | 60  | 60  | 60  |
| b    | 60  | 60  | 60  | 60  | 60  | 60  |
| c    | 5,5 | 5,5 | 5,5 | 5,5 | 5,5 | 5,5 |
| d    | 75  | 75  | 75  | 75  | 75  | 75  |
| e    | 75  | 75  | 75  | 75  | 75  | 75  |
| f    | 52  | 53  | 53  | 65  | 65  | 65  |
| h    | 46  | 60  | 60  | 60  | 60  | 60  |
| n    | 28  | 28  | 28  | 27  | 27  | 27  |
| p    | 6   | 9   | 9   | 9   | 9   | 9   |

| Passender Blindflansch, Art.-Nr. 10 015: |     |
|--|-----|
| a  | 60  |
| b  | 60  |
| c  | 5,2 |
| d  | 75  |
| e  | 75  |
| p  | 6   |