

## PRODUCT DATA SHEET

---

Part number 411406

EAN 4015609018772

Manufacturer WALTHER-WERKE

WEEE-Reg.-Number: DE 22131895

### Product description

---

Panel socket straight 16A 4P 6h with screwed flange 80x80mm



Similar image

### Detailed product description

---

WALTHER Panel socket 16A 4P 400V 6h IP44  
 straight  
 made from PA6 material  
 finger-safe in accordance with BGV A3  
 also suitable for cable channels with 80mm infeed width  
 with screwed flange  
 flange 80x80  
 fixing center 60x60



### Ordering Information

---

Order unit	Piece
Customs number	85366990
Net weight	0,1767 kg
Packing quantity (VPE)	10
Length of the packaging	0,31 m
Width of the packaging	0,195 m
Depth of the packaging	0,14 m
Gross weight(VPE)	1,915 kg

### Certificates

---

VDE certification	123017	
EAC certification	BY112.02.01.020 06089	

## Classification system

---

Classification system	ETIM_6.0
ETIM Class	EC001317

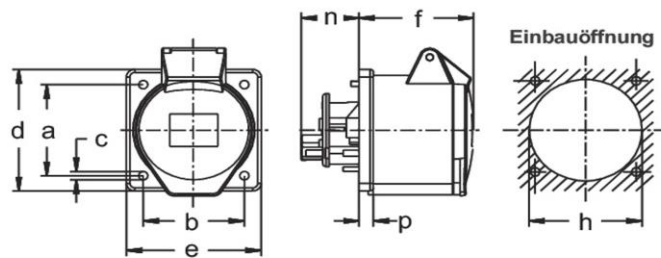
## Technical product data

---

IEC-amperage	16 A
Amperage acc. UL/CSA (for UL-version)	20 A
Number of poles	4
Voltage acc. EN 60309-2	400 V (50+60 Hz) red
Clock hour position	6 h
Identification colour	Red
RAL-number	3000
Degree of protection (IP)	IP44
Connection system	Screwed terminal
Angle of plug	Straight
Material	Plastic
Military model	False
Flange size vertical	80 mm
Drill hole distance vertical	60 mm
Flange size horizontal	80 mm
Drill hole distance horizontal	60 mm

## Dimension sheet

---



Amp.	16		32		
Pole	4	5	3	4	5
a	60	60	60	60	60
b	60	60	60	60	60
c	5,5	5,5	5,5	5,5	5,5
d	80	80	80	80	80
e	80	80	80	80	80
f	60	60	60	60	60
h	67	67	71	71	71
n	32	32	32	32	32
p	8,5	8,5	8,5	8,5	8,5