

## PRODUCT DATA SHEET

---

Part number 415406

---

EAN 4015609018956

Manufacturer WALTHER-WERKE

WEEE-Reg.-Number: DE 22131895

### Product description

---

MONDO panel socket straight 16A 4P 6h with flange 90x90mm



Product image

### Detailed product description

---

WALTHER Panel socket 16A 4P 400V 6h IP44

straight

from the MONDO series

made from PA6 material

in light grey (RAL 7035)

flange 90x90

fixing center 30.4x65.2



The flat cover allows a low housing height and is therefore suitable for prestigious areas.

### Ordering Information

---

Order unit	Piece
Customs number	85366990
Net weight	0,2214 kg
Packing quantity (VPE)	10
Length of the packaging	0,31 m
Width of the packaging	0,255 m
Depth of the packaging	0,15 m
Gross weight(VPE)	2,41 kg

## Certificates

VDE certification	123017	
EAC certification	BY112.02.01.020 06089	

## Classification system

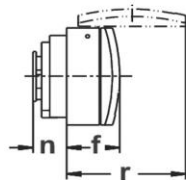
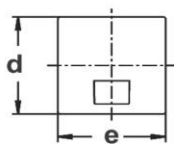
Classification system	ETIM_6.0
ETIM Class	EC001318

## Technical product data

Current supply	CEE 16 A
Number of poles	4
Voltage acc. EN 60309-2	400 V (50+60 Hz) red
Clock hour position	6 h
Identification colour	Red
Construction type	Equipment mounted socket outlet (under plaster)
Configuration	Closed cover
Colour	Grey
RAL-number	7035

## Dimension sheet

415



Amp.	16			32		
Pole	3	4	5	3	4	5
a	30,4	30,4	30,4	60	60	60
b	65,2	65,2	65,2	60	60	60
c	4,1	4,1	4,1	4,1	4,1	4,1
d	90	90	90	90	90	90
e	90	90	90	90	90	90
f	38	38	38	45	45	45
h	65	65	65	75	75	75
n	36	36	36	31	31	31
r	96	96	96	104	104	104
z	-/-	-/-	-/-	80	80	80

435

