

PRODUCT DATA SHEET

Part number	417306RW
EAN	4015609173877
Manufacturer	WALTER-WERKE
WEEE-Reg.-Number:	DE 22131895

Product description

MONDO panel socket straight 16A 3P 6h with flange 90x90mm, pure white, also suitable for channel installation



Product image

Detailed product description



WALTER Panel socket 16A 3P 230V 6h IP44
 straight
 from the MONDO series
 made from PA6 material
 also suitable for channel installation
 in light grey (RAL 7035)
 flange 80x70
 fixing center 53x32

The flat cover allows a low housing height
 and is therefore suitable for prestigious areas.

Ordering Information

Order unit	Piece
Customs number	85366990
Net weight	0,1286 kg
Packing quantity (VPE)	10
Length of the packaging	0,31 m
Width of the packaging	0,163 m
Depth of the packaging	0,113 m
Gross weight(VPE)	1,398 kg

Certificates

VDE certification	123017	
EAC certification	BY112.02.01.020 06089	

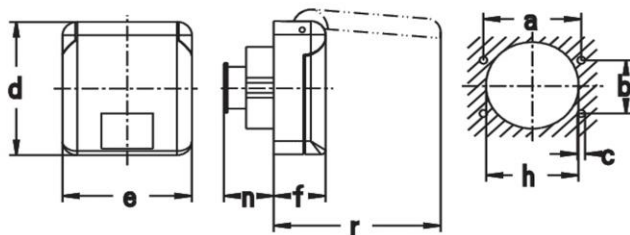
Classification system

Classification system	ETIM_6.0
ETIM Class	EC001318

Technical product data

Current supply	CEE 16 A
Number of poles	3
Voltage acc. EN 60309-2	230 V (50+60 Hz) blue
Clock hour position	6 h
Identification colour	Blue
Construction type	Equipment mounted socket outlet (under plaster)
Configuration	Closed cover
Colour	White
RAL-number	9010

Dimension sheet



Amp.	16
Pole	3
a	53
b	32
c	4,2
d	80
e	70
f	28
h	50
n	29
r	91

Befestigungsmaß = a + b,
 Flanschmaß = d + e