

## PRODUCT DATA SHEET

---

Part number	417306
EAN	4015609019304
Manufacturer	WALTER-WERKE
WEEE-Reg.-Number:	DE 22131895

### Product description

---

MONDO panel socket straight 16A 3P 6h with flange 80x70mm, also suitable for channel installation



Product image

### Detailed product description

---

WALTER Panel socket 16A 3P 230V 6h IP44  
 straight  
 from the MONDO series  
 made from PA6 material  
 also suitable for channel installation  
 in light grey (RAL 7035)  
 flange 80x70  
 fixing center 53x32



The flat cover allows a low housing height and is therefore suitable for prestigious areas.

### Ordering Information

---

Order unit	Piece
Customs number	85366990
Net weight	0,1302 kg
Packing quantity (VPE)	10
Length of the packaging	0,31 m
Width of the packaging	0,163 m
Depth of the packaging	0,113 m
Gross weight(VPE)	1,414 kg

## Certificates

VDE certification	123017	
EAC certification	BY112.02.01.020 06089	

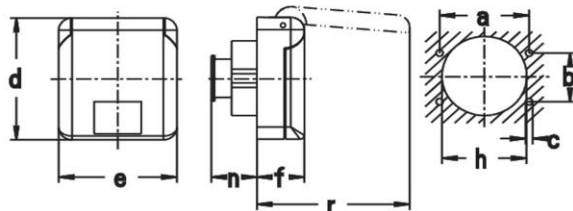
## Classification system

Classification system	ETIM_6.0
ETIM Class	EC001318

## Technical product data

Current supply	CEE 16 A
Number of poles	3
Voltage acc. EN 60309-2	230 V (50+60 Hz) blue
Clock hour position	6 h
Identification colour	Blue
Construction type	Equipment mounted socket outlet (under plaster)
Configuration	Closed cover
Colour	Grey
RAL-number	7035

## Dimension sheet



<b>Amp.</b>	<b>16</b>
<b>Pole</b>	<b>3</b>
a	53
b	32
c	4,2
d	80
e	70
f	28
h	50
n	29
r	91

Befestigungsmaß = a + b,  
 Flanschmaß = d + e