

## PRODUCT DATA SHEET

---

Part number 431409

EAN 4015609019908

Manufacturer WALTHER-WERKE

WEEE-Reg.-Number: DE 22131895

### Product description

---

Panel socket straight 32A 4P 9h with screwed flange 80x80mm



Similar image

### Detailed product description

---

WALTHER Panel socket 32A 4P 230V 9h IP44  
 straight  
 made from PA6 material  
 finger-safe in accordance with BGV A3  
 also suitable for cable channels with 80mm infeed width  
 with screwed flange  
 flange 80x80  
 fixing center 60x60



### Ordering Information

---

Order unit	Piece
Customs number	85366990
Net weight	0,23 kg
Packing quantity (VPE)	10
Length of the packaging	0,31 m
Width of the packaging	0,255 m
Depth of the packaging	0,15 m
Gross weight(VPE)	2,496 kg

### Certificates

---

VDE certification	123021	
EAC certification	BY112.02.01.020 06089	

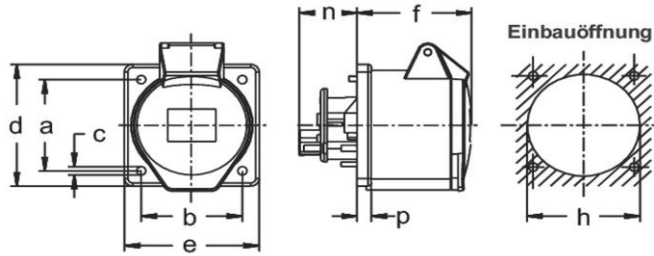
## Classification system

Classification system	ETIM_6.0
ETIM Class	EC001317

## Technical product data

IEC-amperage	32 A
Amperage acc. UL/CSA (for UL-version)	30 A
Number of poles	4
Voltage acc. EN 60309-2	230 V (50+60 Hz) blue
Clock hour position	9 h
Identification colour	Blue
RAL-number	5002
Degree of protection (IP)	IP44
Connection system	Screwed terminal
Angle of plug	Straight
Material	Plastic
Military model	False
Flange size vertical	80 mm
Drill hole distance vertical	60 mm
Flange size horizontal	80 mm
Drill hole distance horizontal	60 mm

## Dimension sheet



Amp.	16		32		
	4	5	3	4	5
a	60	60	60	60	60
b	60	60	60	60	60
c	5,5	5,5	5,5	5,5	5,5
d	80	80	80	80	80
e	80	80	80	80	80
f	60	60	60	60	60
h	67	67	71	71	71
n	32	32	32	32	32
p	8,5	8,5	8,5	8,5	8,5