

PRODUCT DATA SHEET

Part number 435406

EAN 4015609019984

Manufacturer WALTHER-WERKE

WEEE-Reg.-Number: DE 22131895

Product description

MONDO panel socket straight 32A 4P 6h with flange 90x90mm



Product image

Detailed product description

WALTHER Panel socket 32A 4P 400V 6h IP44

straight

from the MONDO series

made from PA6 material

in light grey (RAL 7035)

flange 90x90



fixing center 60x60

The flat cover allows a low housing height and is therefore suitable for prestigious areas.

Ordering Information

Order unit	Piece
Customs number	85366990
Net weight	0,271 kg
Packing quantity (VPE)	10
Length of the packaging	0,31 m
Width of the packaging	0,195 m
Depth of the packaging	0,14 m
Gross weight(VPE)	2,858 kg

Certificates

VDE certification	123021	
EAC certification	BY112.02.01.020 06089	

Classification system

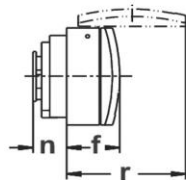
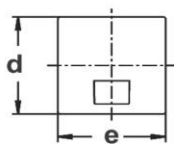
Classification system	ETIM_6.0
ETIM Class	EC001318

Technical product data

Current supply	CEE 32 A
Number of poles	4
Voltage acc. EN 60309-2	400 V (50+60 Hz) red
Clock hour position	6 h
Identification colour	Red
Construction type	Equipment mounted socket outlet (under plaster)
Configuration	Closed cover
Colour	Grey
RAL-number	7035

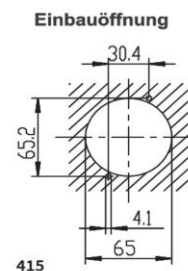
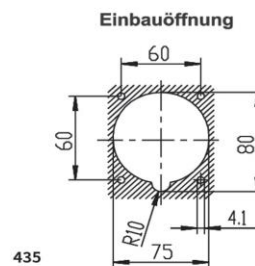
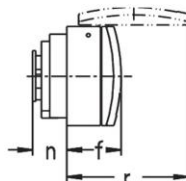
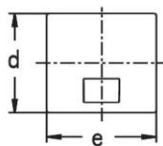
Dimension sheet

415



Amp.	16			32		
Pole	3	4	5	3	4	5
a	30,4	30,4	30,4	60	60	60
b	65,2	65,2	65,2	60	60	60
c	4,1	4,1	4,1	4,1	4,1	4,1
d	90	90	90	90	90	90
e	90	90	90	90	90	90
f	38	38	38	45	45	45
h	65	65	65	75	75	75
n	36	36	36	31	31	31
r	96	96	96	104	104	104
z	-/-	-/-	-/-	80	80	80

435



435

415