

PRODUCT DATA SHEET

Part number 460409

EAN 4015609020355

Manufacturer WALTHER-WERKE

WEEE-Reg.-Number: DE 22131895

Product description

Panel socket straight 63A 4P 9h with flange
 107x100mm



Product image




Detailed product description

WALTHER Panel socket 63A 4P 230V 9h IP44
 straight
 made from PA6 material
 finger-safe in accordance with BGV A3
 soft transition
 radius from flange to collar
 flange 107x100
 fixing center 85x77

Ordering Information

| | |
|-------------------------|----------|
| Order unit | Piece |
| Customs number | 85366990 |
| Net weight | 0,645 kg |
| Packing quantity (VPE) | 5 |
| Length of the packaging | 0,31 m |
| Width of the packaging | 0,255 m |
| Depth of the packaging | 0,15 m |
| Gross weight(VPE) | 3,421 kg |

Certificates

| | | |
|-------------------|-----------------------|---|
| VDE certification | 40000707 |  |
| UL certification | No. E83342 |  |
| EAC certification | BY112.02.01.020 06089 |  |

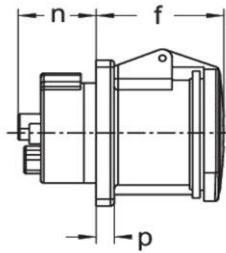
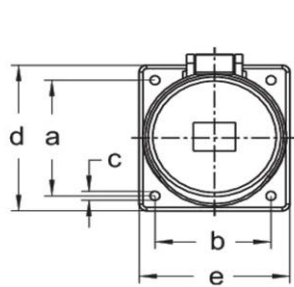
Classification system

| | |
|-----------------------|----------|
| Classification system | ETIM_6.0 |
| ETIM Class | EC001317 |

Technical product data

| | |
|---------------------------------------|-----------------------|
| IEC-amperage | 63 A |
| Amperage acc. UL/CSA (for UL-version) | 60 A |
| Number of poles | 4 |
| Voltage acc. EN 60309-2 | 230 V (50+60 Hz) blue |
| Clock hour position | 9 h |
| Identification colour | Blue |
| RAL-number | 5002 |
| Degree of protection (IP) | IP44 |
| Connection system | Screwed terminal |
| Angle of plug | Straight |
| Material | Plastic |
| Military model | False |
| Flange size vertical | 107 mm |
| Drill hole distance vertical | 85 mm |
| Flange size horizontal | 100 mm |
| Drill hole distance horizontal | 77 mm |

Dimension sheet



| Amp. | 63 | | |
|------|-----|-----|-----|
| Pole | 3 | 4 | 5 |
| a | 85 | 85 | 85 |
| b | 77 | 77 | 77 |
| c | 6,5 | 6,5 | 6,5 |
| d | 107 | 107 | 107 |
| e | 100 | 100 | 100 |
| f | 85 | 85 | 85 |
| h | 90 | 90 | 90 |
| n | 52 | 52 | 52 |
| p | 12 | 12 | 12 |